

## TCE 621 BLACK

TCE 621 Black is a member of the Cryptel®-IP family, specially designed to allow simplified rules for handling and control. It is targeted to protect communications between NATO and NNN/IO up to NATO Secret/Mission Secret. TCE 621 Black is interoperable with other members of the Cryptel®-IP family.

### Applications

- Federated operations including non NATO nations (NNN)
- Widespread governmental use
- Operations with high risk of equipment losses

### Main Features

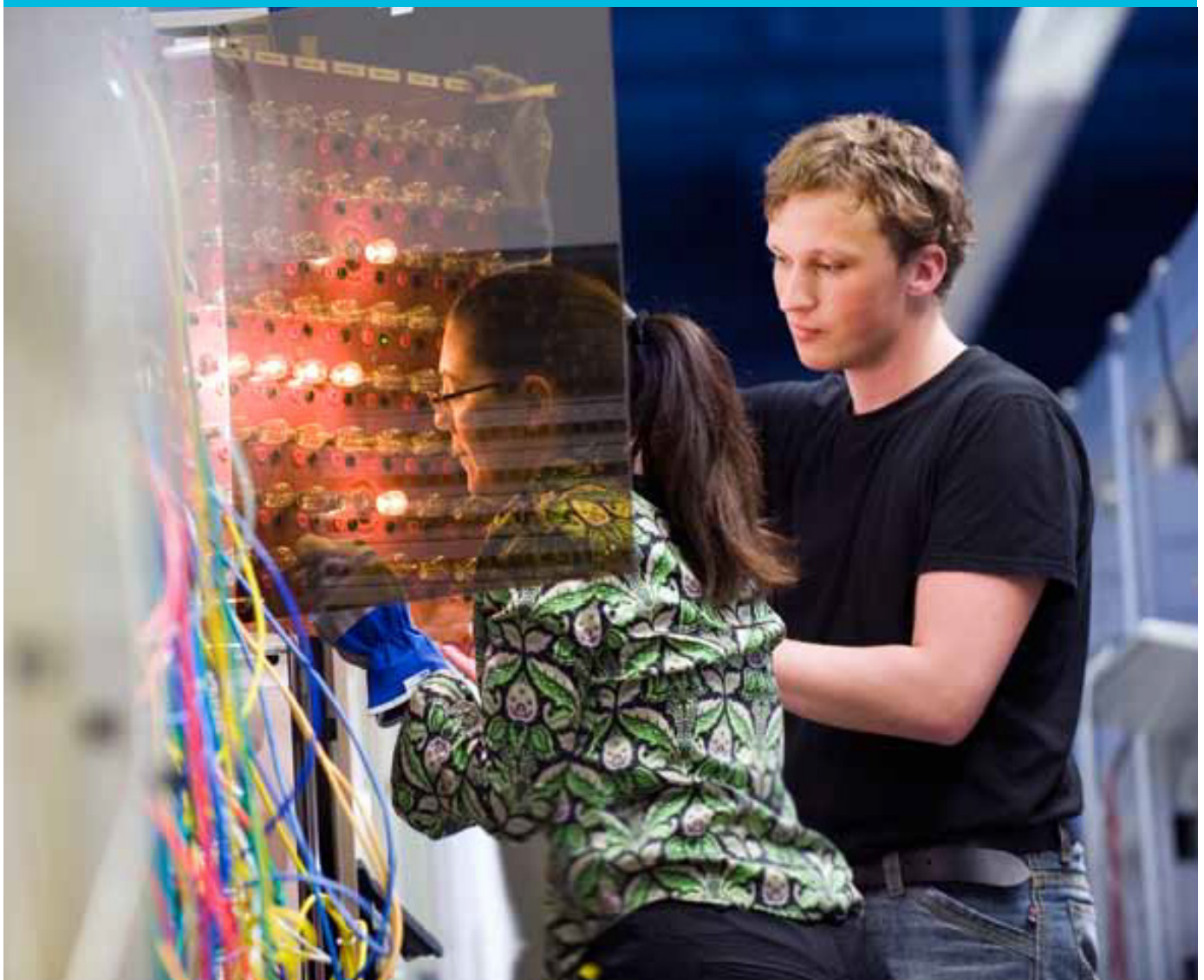
- Gigabit Ethernet
- Ipv4 and IPv6
- Transparent to network services
- AES implementation approved for NATO Secret/Mission Secret traffic
- Interoperable with other Cryptel-IP AES versions
- Secure multicast
- Hot standby
- NAT support
- Non-CCI device



NETWORK SECURITY

## TCE 621 BLACK

IP-encryption device with simplified handling rules



# TCE 621 BLACK

## IP-encryption device with simplified handling rules

The **TCE 621 Black** is designed for use at locations where standard CCI handling rules cannot be achieved, e.g. when used by a non-NATO nation or international organization (NNN/IO). The equipment provides encryption of traffic with classification up to the level of Secret.

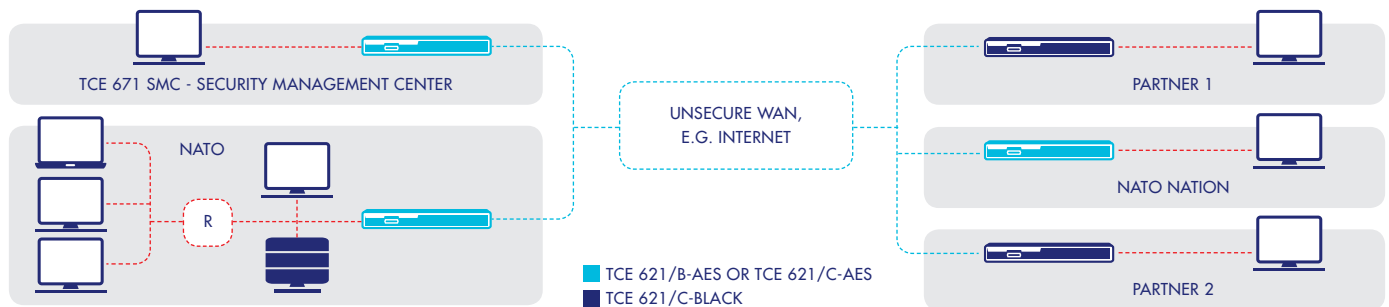
The **TCE 621 Black** integrates fully with a network secured by TCE 621 AES encryption devices, and can therefore be managed from the same TCE 671 Security Management Centre.

The **TCE 621 Black** will only accept encrypted keys generated and distributed from an approved offline key generation facility. A part of the equipment is the Crypto Ignition Key (CIK) in a Smartcard format. With the CIK removed, the TCE 621 is declassified. In addition, an emergency erase feature and a tamper protection mechanism are included.

**Configuration** is done through the front panel, or by use of a dedicated software application. No day-to-day handling is necessary during operation. Due to the very low latency time introduced by TCE 621, it is well suited for protection of all kinds of user traffic, ranging from office applications and web browsing to time critical real-time traffic, e.g. VoIP and video conference.

**As in other** Cryptel®-IP networks the TCE 671 SMC (Security Management Center) is used for automatic key generation, key distribution and remote management of all IP crypto devices.

The **TCE 671 SMC** functions include key management, access control management, security monitoring and configuration management. For increased availability several SMCs in the network can be configured in a master/slave configuration with automatic data replication.



### Technical data:

#### Security characteristics

##### Security level

- > Type B (AES) algorithm
- > Approved for NATO Secret

##### Security Protocol

- > IETF RFC 2406 – ESP

##### Security Management

- > Manual
- > Electronic via TCE 671 SMC

##### Software upgradable

- > Remotely from TCE 671 SMC
- > Locally from front panel

##### Tempest

- > According to SDIP 27 level A

##### Operational Security

- > Removable Crypto Ignition Key
- > Operator password (2 levels)
- > Tamper protection
- > Emergency erase switch

#### Interfaces

##### Black Network Interfaces

- > IPv4 (RFC 791)
- > IPv6 (RFC 2460)
- > Ethernet 10/100 Mbit/s and Gigabit

##### Red Local Interface

- > IPv4 (RFC 791)
- > IPv6 (RFC 2460)
- > Ethernet 10/100 Mbit/s and Gigabit

##### Fill Device Interfaces

- > DS-101 (RS-485); AN/CYZ-10 DTD
- > V.24/V.10 (RS-232C); PC
- > Smart card (ISO/IEC 7816)

#### Physical Characteristics

##### Temperature

- > Operating: 0 to + 40 °C
- > Storage: - 20 to + 70 °C

##### Power Consumption

- > Max 25 W
- > Nominally 20 W

#### Power feeding

- > 110 & 230 V AC / 47-63 Hz
- > Automatic adaptation

#### Installation

- > 19 " rack mounting

#### Dimensions

- > Width: 440 mm
- > Height: 44 mm (1 U)
- > Depth: 250 mm

#### Weight

- > 4,1 kg

#### EMC

- > 89/336/EEC
- > EN 55022 class B

#### Reliability

- > MTTF > 100 000 h (calculated, Mil HDBK 217 F)

#### Environment

- > IEC 68-2
- > DEF-STAN 07-55

#### Performance

- > Full duplex data rate: 600 Mbit/s
- > 200 000 packets/s
- > Latency time : < 5 µs
- > Up to 15 000 simultaneous Security Associations (SA)
- > No SA establishment time

#### Other support functions

- > QoS enabled
- > NAT enabled (UDP encapsulation)
- > Secure multicast
- > Receive only mode
- > Configurable SNMP support

#### Support components

- > Network Planner
- > Configuration Tool application
- > Softw are Loader application
- > Cables
- > AC/DC adapter (110-240 VAC)
- > Optical adapter (MT-RJ, LC)
- > Mounting brackets