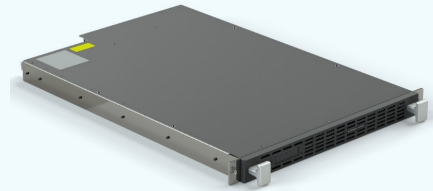


# IB8021 Isolation Appliance



## Garrison SAVI® Isolation Platform

Silicon Assured Video Isolation (SAVI) technology from Garrison provides cross-domain “browse” access to lower-security networks using hardware-implemented security. With the Garrison SAVI® Isolation Platform, users can gain access to risky applications, content and services without worrying about malware or data exfiltration.



The Garrison IB8021 Isolation Appliance (GIA) is a 19” server rack mountable hardware appliance supporting 14 concurrent users, delivering high-performance access to applications, services and content including rich media such as high-definition video.

## Garrison SAVI® security model

The GIA contains a Remote (LOW) and a Client (HIGH) network interface. The unique patented Garrison SAVI® hardware architecture ensures that only raw bitmaps (at 1080p, 60fps) and raw uncompressed digital audio are transferred from the Remote to the Client interfaces. The worst-case scenario is that malicious sites and software on the Remote side of the appliance can show bad pictures and sounds to the Client side – with absolutely no ability to compromise any Client-connected systems.

Keyboard and mouse commands from Client-connected end user devices flow in the other direction over a separate, auditable, unidirectional hardware interface.

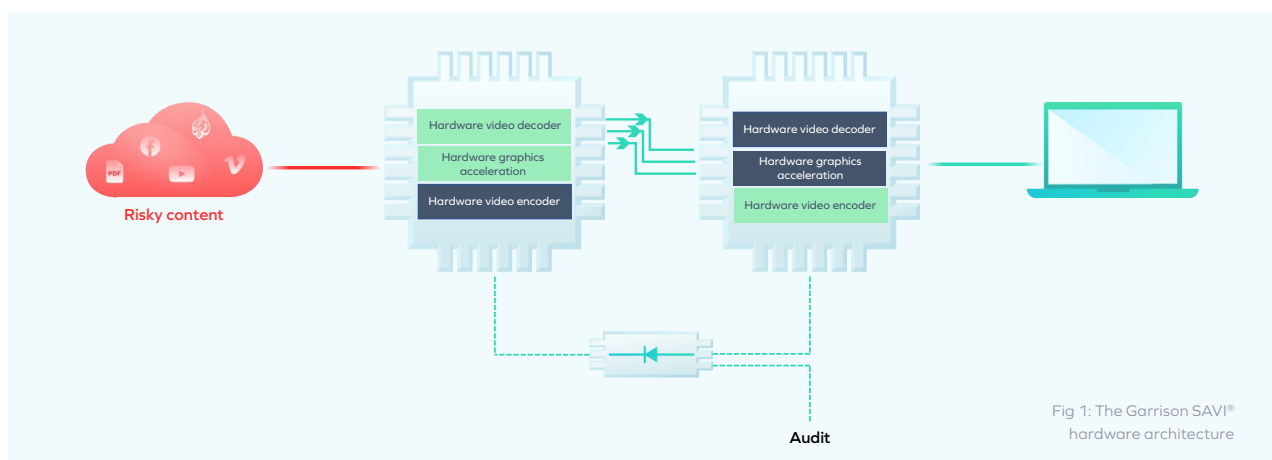


Fig 1: The Garrison SAVI® hardware architecture

Garrison Secure Reboot technology means each Garrison SAVI® node is fully rebooted and restored to a clean state after each user session, ensuring that any Remote-side malware cannot persist within Operating System images between sessions.

All Garrison SAVI® security features are hardware-enforced, meaning the appliance itself cannot be compromised by remote attack and can form the basis of long-lasting protection and peace of mind.

# IB8021 Isolation Appliance

The IB8021 Isolation Appliance supports 14 concurrent users. The unit can be used in a 19" rack with the mounting kit provided.

Specifications	
Height	43 mm
Depth	695 mm (650 mm excluding front panel and handles)
Width	491 mm (441 mm excluding front panel and handles)
Weight	10.5 kg
Maximum power consumption	500 W
Maximum sound pressure	74 dBA (measured at 1m)
Connections	
Remote Network	Dual 1000Base-T Ethernet, RJ45
Management Network	Dual 1000Base-T Ethernet, RJ45
Client Network	Dual 1000Base-T Ethernet, RJ45
AC mains supply	100-240 V AC, 50/60 Hz, 2x IEC C14
Environmental	
Operating temperature range	10°C to 35°C
Storage temperature range	-20°C to 60°C
Maximum temperature gradient	20°C / hour
Operating humidity	10% to 80% relative humidity, non-condensing
Storage humidity	5% to 95% relative humidity, non-condensing
Maximum operating altitude	2000 m
Maximum storage altitude	10000 m
IP rating	IP20
System air flow	Front to back air flow (i.e. towards connectors)
Intake air	Free of conductive dust or other conductive particles Free of corrosive dust
Compliance	
Electromagnetic compatibility	EN 55032:2015+A11:2020, Class A EN 55035:2017+A11:2020 EN 61000-3-2:2019 EN 61000-3-3:2013+A1:2019 ANSI C63.4:2014 ICES-003 Issue 6, Class A FCC 47 CFR Part 15B, Class A
Safety	IEC/UL 62368-1:2014 EN 62368-1:2014+A11:2017 CAN/CSA C22.2 No. 62368-1-14 AS/NZS 62368.1:2018
Environment	EN 63000:2018 EN 50419:2022